

# BICHA

STIMULATION  
FOR THE NATION

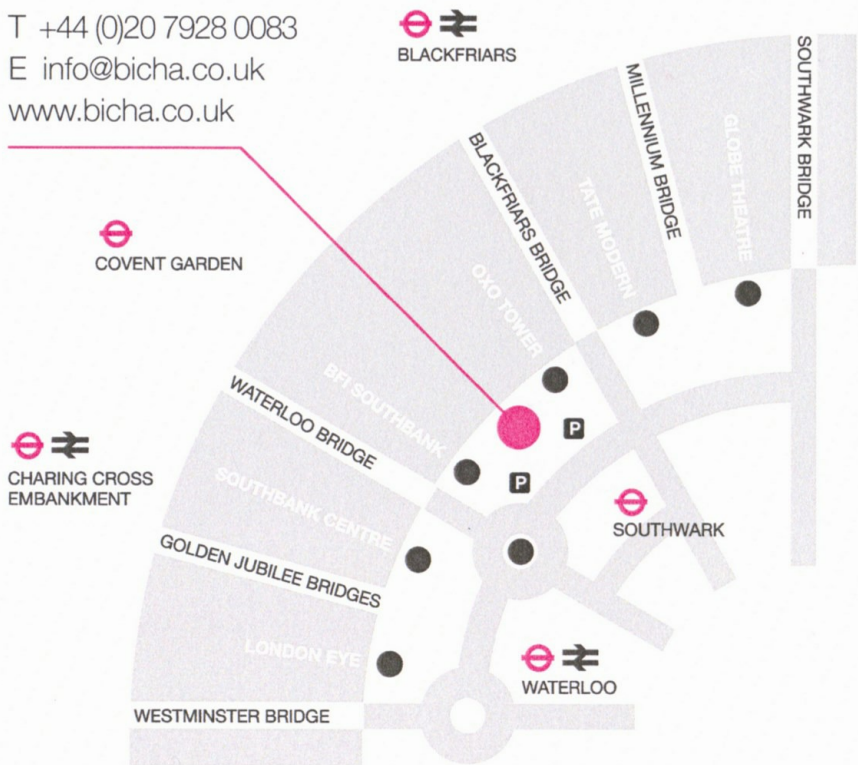
## BICHA

Bicha Gallery & Shop  
7 Gabriel's Wharf  
South Bank  
London SE1 9PP

T +44 (0)20 7928 0083

E [info@bicha.co.uk](mailto:info@bicha.co.uk)

[www.bicha.co.uk](http://www.bicha.co.uk)

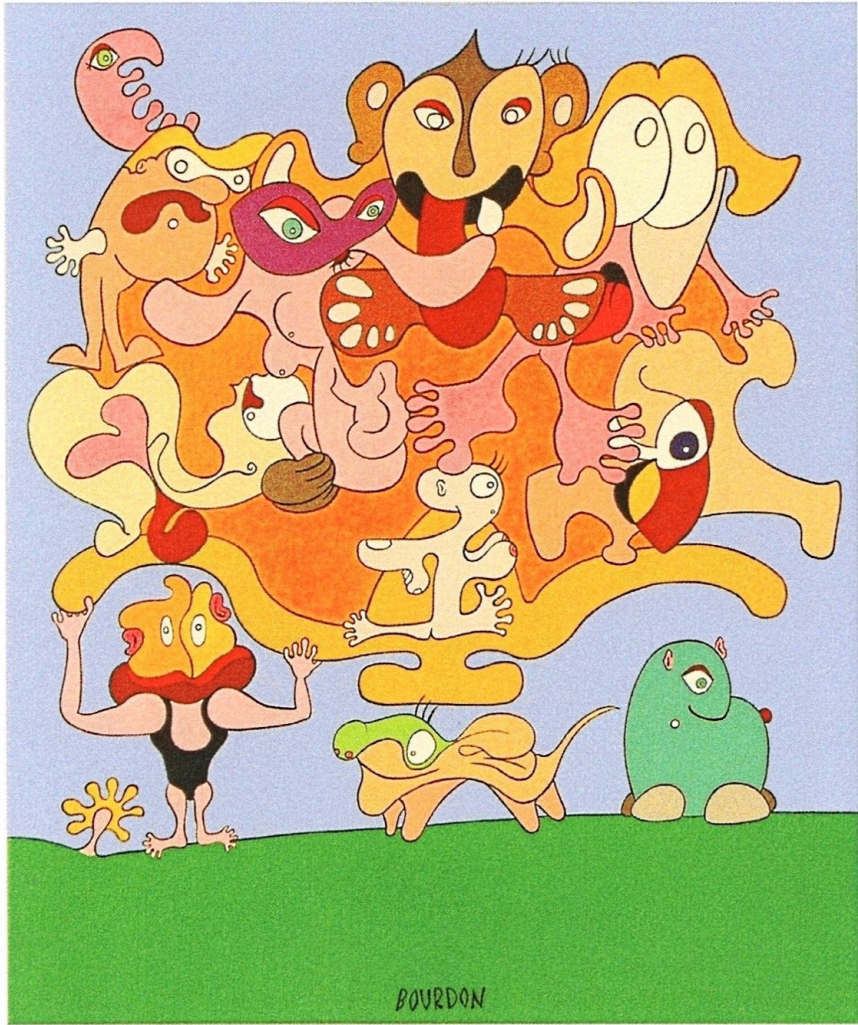


Bicha represents living contemporary artists from Australia, Botswana, Brazil, Canada, France, Italy, Norway, Spain, the US and the UK – working in ceramics, drawing, installation, metal work, mixed media, painting, photography, printmaking, and sculpture.

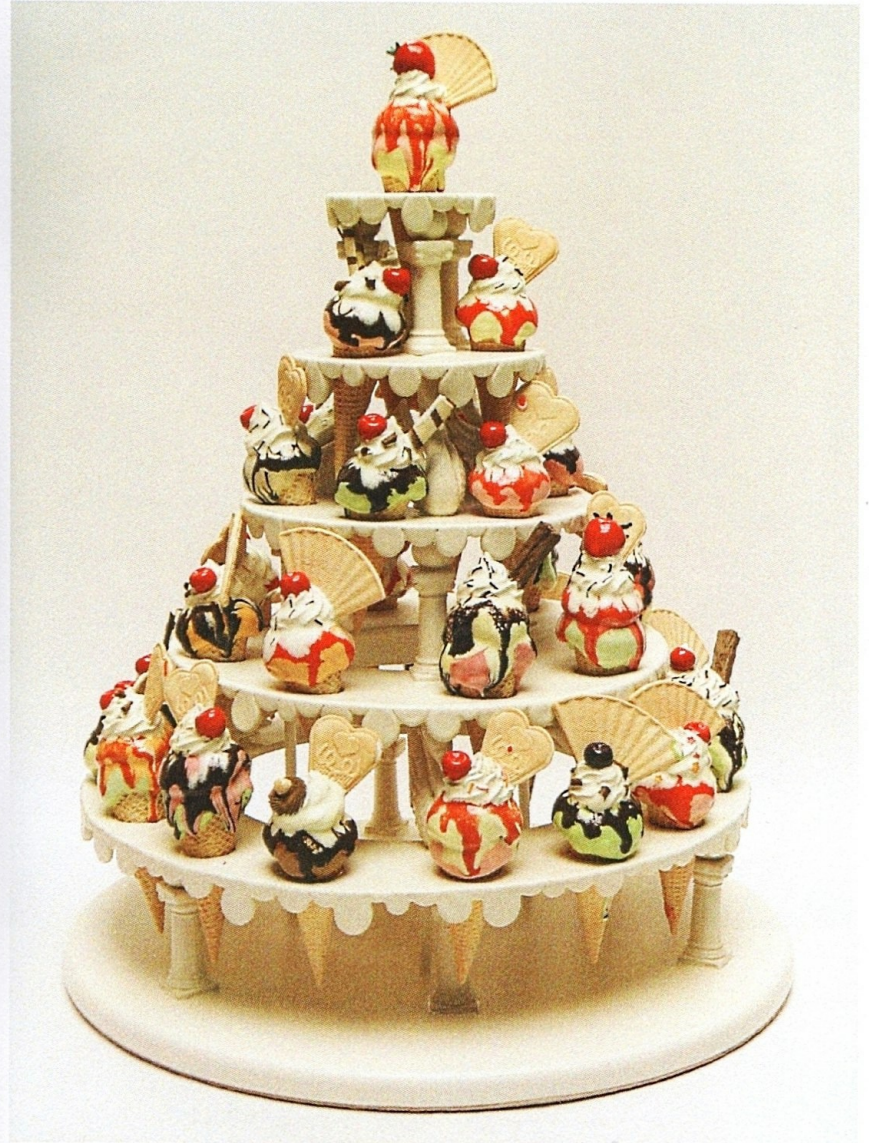


**Girls Drawing at Tate Britain** Oil on canvas, W 710 x H 910 mm, 2010





**The Raft of the Medusa** Acrylic on linen with varnish, W 460 x H 555 mm, 2009



**The Queen's Ice Cream** Porcelain, earthenware, glaze, W 500 x H 600mm, 2010





Untitled (Aksu I) Metallic digital C-type print (detail), W 1143 x H 762 mm, Edition/5, 2008

Bicha Gallery has regular exhibitions at its South Bank home and works with galleries in both Portugal and Canada. On the road, Bicha shows at many international art fairs including Amsterdam, Bristol, Brussels, London, Newcastle, Paris and Singapore.

The gallery seeks to collaborate on art events and has worked with the Earl's Court Festival, Wyndham Grand Hotels, Chelsea and Westminster Health Charity Hospital Arts, Osborne & Little, The Chelsea Club, The London Design Festival, London Fashion Week and the City of London Festival.

Bicha also offers professional framing services; a range of contemporary to traditional frames, conservation skills and more than 30 years of experience.